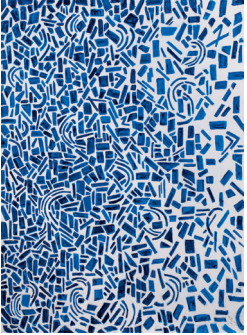

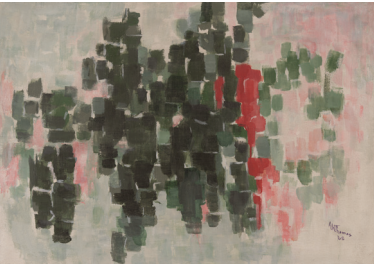


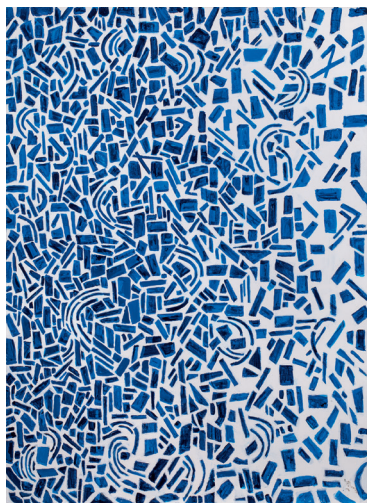
ALMA THOMAS'S ABSTRACT ART GUIDE

DIRECTIONS: Study each image. Answer the questions that follow.

ARTWORK	What do I notice in the painting? (For example, with the colors, lines, and shapes)	What emotions does this painting make me feel?	What real life object or event does this painting remind me of?
			
			
			

ALMA THOMAS'S ABSTRACT ART GUIDE

DIRECTIONS: After studying the paintings above, look at the paintings again, this time with captions. How does the title of the painting influence what you see? Does this change your experience of the painting? Jot down your thoughts in the space below.



Alma W. Thomas, *Babbling Brook and Whistling Poplar Tree Symphony*, 1976, Acrylic on canvas, 72 × 52 in., Michael Rosenfeld Gallery LLC, New York



Alma W. Thomas, *Spring Flowers Near Jefferson Memorial*, 1970, Acrylic on canvas, 50 × 60 in., Fisk University Galleries, Fisk University, Nashville, Tennessee (1991.2116)



Alma W. Thomas, *Red Tree in High Winter*, 1968, Acrylic and graphite on canvas, 24 x 34 ¼ in. Colby College Museum of Art, museum purchase from the Jere Abbott Acquisitions Fund, 2017.383