

4

THE FERRY

# GLENN O. COLEMAN

November 18 to December 6, 1930

THE  
DOWNTOWN GALLERY

113 WEST 13 STREET - NEW YORK

Open Daily Ten to Six; Sundays Three to Six; Wednesday Evenings Eight to Ten

## FOREWORD

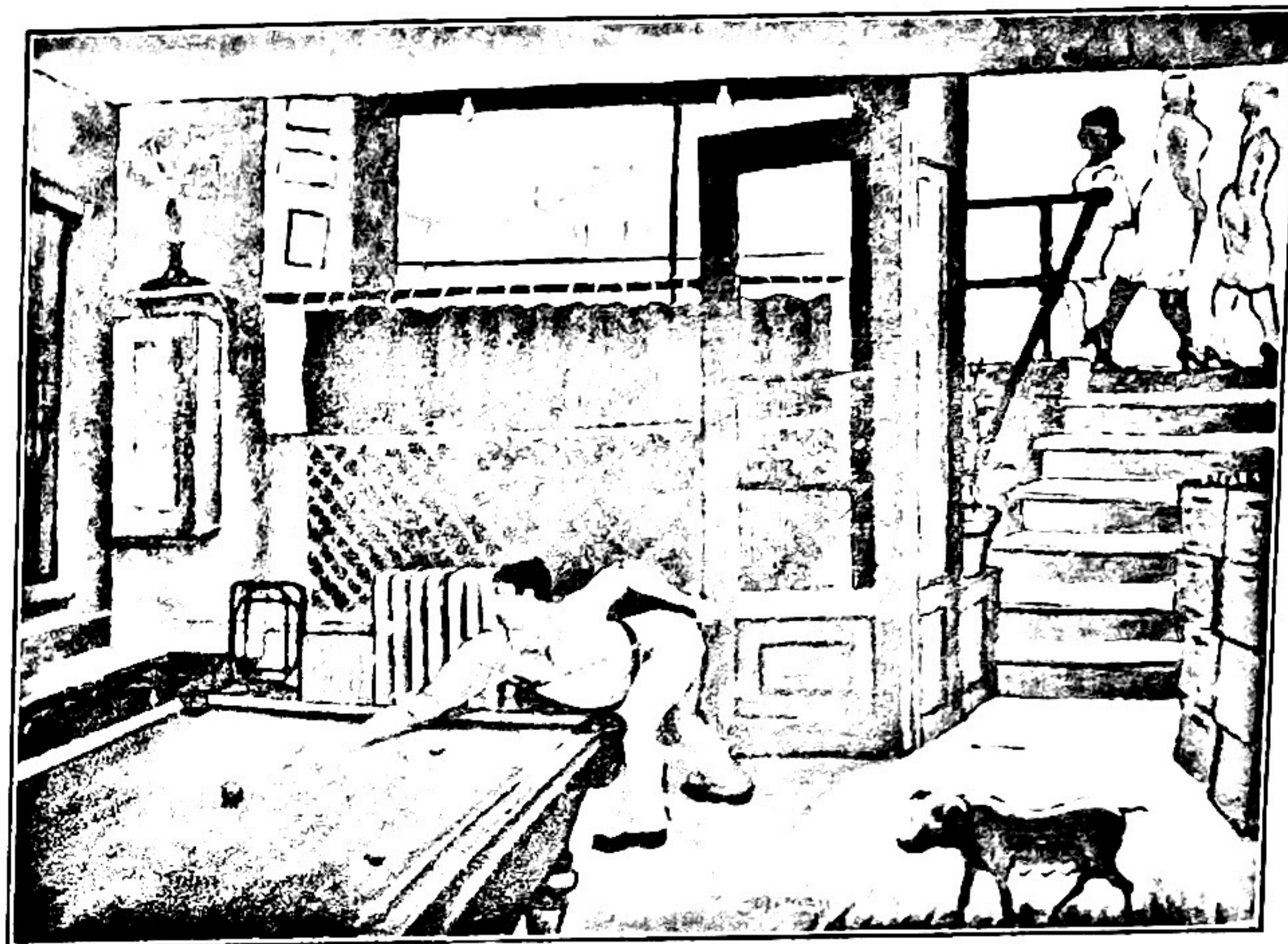
GLENN O. COLEMAN is one of the most distinguished products of that historic event, the Armory Show. He came to New York twenty-five years ago and quickly became known in the more advanced art circles of the day through the school of Robert Henri, and the important artists' group shows.

To a young man coming from the middle west — he was born in Springfield, Ohio, in 1887. — New York was an adventure, and that is why his work has become one of the permanent records of our period. He sets down a fascinating personal interpretation of the familiar places of New York, which have rapidly been changing in character with the architectural revival of the past few years. With this change of architecture, his canvases have taken on new forms, and his gamut new hues.

Coleman is a sensitive observer of the contemporary scene, as it is found in the great American cities.

"I have always liked to paint streets and buildings," he says. "I feel that they have personality — gaudy streets that beckon with flashing signs or stare at you with window eyes, the rust stained streets of laborers, decrepit houses propped up with timber crutches. The once affluent street is now shabby and down at the heel. Sometimes it 'comes back' and even puts on a little swank, like Minetta Lane. The new generation of skyscrapers hovers over the older streets, detached, abstract, a little respectful. This is to me the most fascinating part of the American scene, the New York streets, and that is why I paint them."

Glenn Coleman is represented in the Phillips Memorial Gallery, Washington; the Whitney Museum, the Newark Museum, the Luxembourg in Paris, and in many important private collections.



2

ANGELO'S PLACE

## CATALOG

1. The Red House . . . . .	\$300.
2. Angelo's Place . . . . .	700.
3. From Brooklyn Heights . . . . .	500.
4. The Ferry . . . . .	500.
5. Foothills and Peaks . . . . .	600.
6. The New Church . . . . .	500.
7. Minetta Lane, 1930 . . . . .	600.
8. Still Life . . . . .	600.
9. The Bridge . . . . .	500.
10. Milligan Place . . . . .	350.
11. Cherry Lane . . . . .	500.
12. Street Scene . . . . .	600.
13. The Park . . . . .	600.
14. Brooklyn Bridge . . . . .	600.